

# 3M™ True Definition Scanner

Trusted Connection with BIOMET3i™



## Your next step: an implant workflow.

- Digital solution from front-to-end with no impression workflow
- More comfortable for the patient
- Improve efficiencies with parallel production of the abutment and the final restoration
- Use your own lab to create the final restoration



**BIOMET3i™**  
PROVIDING SOLUTIONS – ONE PATIENT AT A TIME™

Introducing a collaborative workflow for the 3M™ True Definition Scanner

The **BIOMET3i™ BellaTek®** Encode® Impression System is now a trusted and integrated workflow offered with the Advanced Data Plan through the 3M Connection Center. This connection allows you to restore implants — without the use of impression copings.

3M and **BIOMET3i™** Your digital implant solution.

With the speed and accuracy of the 3M True Definition Scanner, combined with the power and productivity **BIOMET3i**, you'll be adding to your practice an all-digital implant experience for you and your patients.

Simply scan the *BellaTek®* Encode Healing Abutment.

Your lab will receive a patient-specific abutment for whatever restoration you prescribe — from Lava™ Ultimate Restorative or other CAD/CAM ceramics to PFM restorations.

► [www.3M.com/TrueDefinition](http://www.3M.com/TrueDefinition)  
► [www.biomet3i.com](http://www.biomet3i.com)



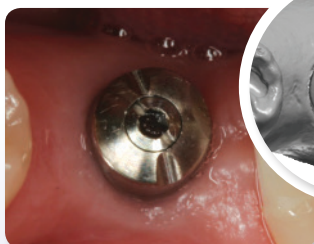
**3M** ESPE

# How it works.

With the 3M™ True Definition Scanner and **BIOMET 3i**™, digital dentistry is in your hands. Our implant workflow eliminates the impression coping step and gives you accurate technology, restorations with an outstanding fit and greater patient comfort and satisfaction.

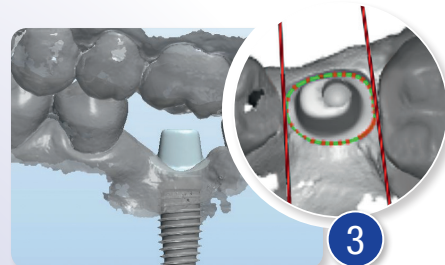


1



2

**Digital Impression.** The clinician or referring dentist uses the 3M True Definition Scanner to accurately replicate the healing abutment — no impression coping is needed.



3

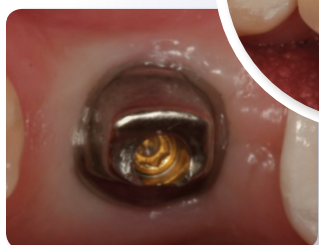
**Custom Abutment.** The BIOMET 3i Technician will design the custom abutment and send the digital design to your lab where they will digitally mark the margin and section the die.



4



**Simultaneous Manufacturing.** The digital process enables simultaneous manufacturing — BIOMET 3i produces and mills the *BellaTek* Abutment, while a trusted stereolithography (SLA) model manufacturer creates the SLA model. Your dental lab digitally designs the crown for the abutment.



6

**Cementation.** The dentist cements the final restoration.



7



5

**Dentist Seats Abutment.** The dentist receives a digitally precise, custom abutment and restoration. The abutment is seated and screw retained.

**Finishing.** Your lab receives the *BellaTek* Abutment from BIOMET 3i and the SLA model and finishes the crown if necessary.

Clinical case courtesy of  
Christopher Ramsey\*, DMD,  
Accredited Member AACD

**3M ESPE**

## Dental Products

2510 Conway Avenue  
St. Paul, MN 55144-1000 USA

## 3M Canada

Post Office Box 5757  
London, Ontario N6A 4T1  
Canada  
1-888-363-3685

## BIOMET 3i LLC

4555 Riverside Drive  
Palm Beach Gardens, FL 33410  
U.S.A.  
1-800-342-5454

3M, ESPE and Lava are trademarks  
of 3M or 3M Deutschland GmbH.  
Used under license in Canada.

BellaTek and Encode are registered  
trademarks and Providing Solutions —  
One Patient At A Time and design are  
trademarks of BIOMET 3i LLC. BIOMET 3i  
and design are trademarks of BIOMET Inc.



ART1166  
REV D 10/13

Please recycle. Printed in U.S.A.  
© 3M 2013. All rights reserved.  
70-2013-0559-9

\* Dr. Christopher Ramsey has a financial relationship with BIOMET 3i, LLC resulting from speaking engagements, consulting engagements and other retained services.